



Gubyon Avenue, SE24

6 bedroom house to let

£1,315 Per Week

Part furnished

Property Details

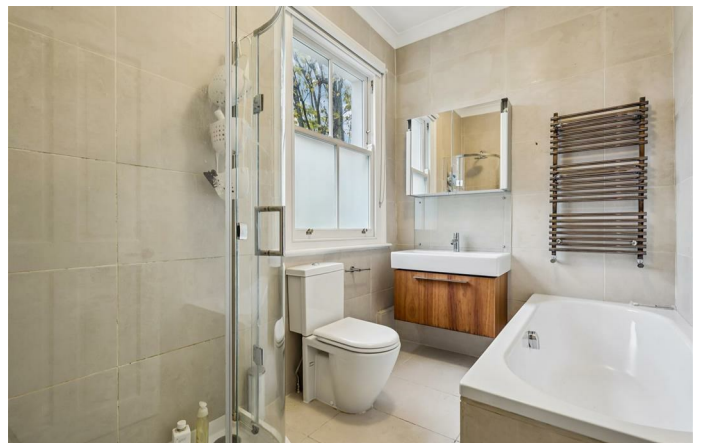
Keating Estates are proud to present to market this immaculate and impressive six double bedroom, two bathroom, double fronted Victorian family home. Nestled peacefully on an attractive residential road within the desirable Herne Hill community, one of the area's most sought-after pockets offering a village-esq, neighbourly feel. Spanning over 2,300 square feet of internal space plus the rarity garden this extensive property will appeal to many family, early registration of interest is advised.

Lovingly maintained by the current owners this beautiful home has been fully extended and strikes the ideal balance of period features combined with modern fixtures and high quality finishes throughout to create an appealing ambience from the moment you enter. The ground floor comprises two reception rooms, a convenient WC and a stunning rear open-plan dine-in kitchen. The double reception room displays charming Victorian character with high, corniced ceilings and original floorboards, a grand and impressive space perfect for entertaining or relaxing. The large bay window adds further character whilst flooding the room with natural light, adding to the appeal are the attractive feature fireplaces, one being a working log burner ideal for unwinding in front of a cosy fire. French doors lead off the rear reception into a pretty terrace, potted with plants and views through the kitchen into the garden beyond.

Features

- Six bedrooms
- Victorian House
- Double fronted
- Spacious
- Sought-after neighbourly street
- Immaculately presented
- Brockwell Park a five-minute stroll
- Herne Hill station a five-minute stroll away

Council tax band F EPC rating D (60)



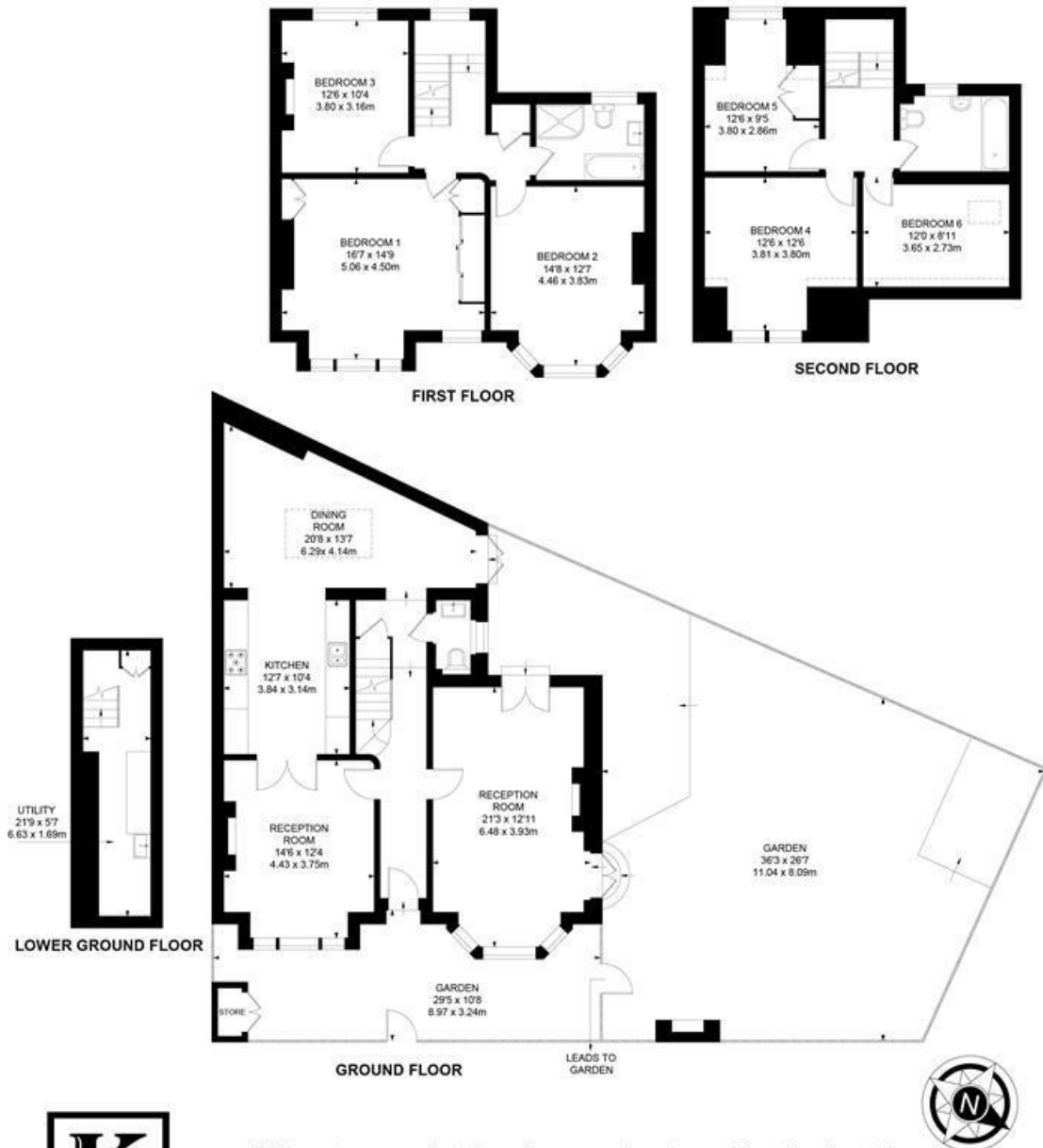
Gubyon Avenue, SE24

Gubyon Road, SE24

6 Bedroom House

APPROXIMATE GROSS INTERNAL AREA :

2233 SQ FT / 207.41 SQ M



While we try our very best, floor plans are produced as a guide only and we take no responsibility for the precise accuracy with which any property is represented.

Gubyon Avenue, SE24

